



# CREATIVE HOME ENGINEERING

IDEA BOOK | 2015

For over 10 years, Creative Home Engineering has been building the world's most imaginative, unique, and highest quality secret doors. With more than 500 projects delivered to customers around the globe one thing is for certain; nobody designs and engineers products like we do.

We hope this idea book serves as the spark to help you envision your next secret door project and highlight why Creative Home Engineering is the perfect partner to share that vision with.

-Steven Humble  
President and Founder

“ This company has all the resources to provide a totally custom project for any interested party. They use computerized drawings to show the customer how the project will look and function. They have a massive manufacturing space to create the actual product. Their staff is friendly, reliable, and very competent in what they do. The hidden room in my house makes a memorable impression to anyone who sees it, and the mechanics of it opening and closing are very well made. Just dream your project and they will deliver! ”

- Louise Kircher

“ Creative Home Engineering is the most amazing group of talent. Two entirely separate projects were completed in my home and they have completely changed the space...for the BETTER. Having two secret passageways seems like a bit extreme but they are both completely functional and usable.

The team drove out from PHX to LA and were extremely reliable, quick and the most of all respectful - AKA.....they kept the house clean, didn't drag the project out longer than needed and put their heart into the finished product.

- “D.V.”

“ Steven and his team did an amazing job installing a hidden passage/custom bookshelf in my office. The hidden door leads to a vintage 80's style arcade. I am very pleased with the process and the final product.

I would highly recommend Creative Home Engineering to anyone looking to create a fun and Functional showpiece for their home or office.

- Darren Campbell

# The Creative Home Engineering Process

Curious as to how to start your secret door project and what to expect when working with Creative Home Engineering? The following steps outline the process:

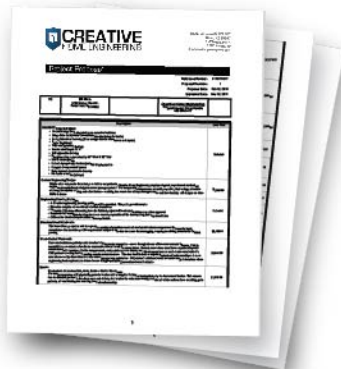
## 1 Initial contact by email or phone.

Every door we build is unique and tailored specifically to each client. Basic information like dimensions, style, wood finish, new build or remodel, and security requirements help our engineers get to work on a quote to meet your needs and budget.



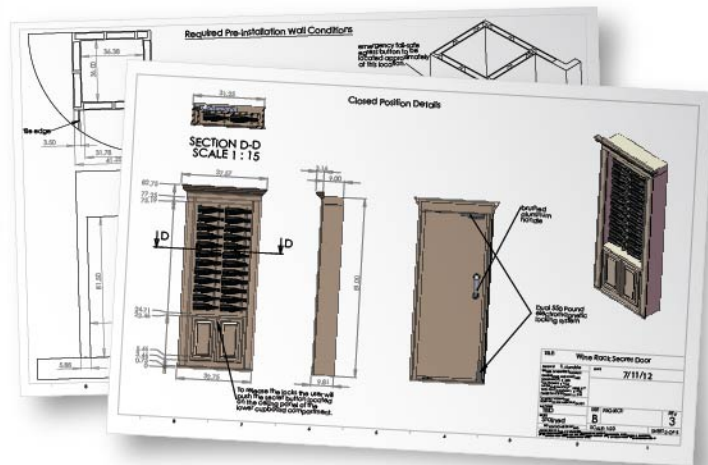
## 2 Project Proposal.

Using the information gathered in step 1, our engineers put together a proposal for you that details the features, finish, cost, and installation options included in your project.



## 3 Client Approval Drawings

After you accept the proposal our team designs the door using 3D modelling software. Then they create a set of technical drawings which show exactly what your hidden passageway will look like and how it will function. We will make as many revisions as necessary [at no extra cost] until the design is perfect. We want you to love it.



#### 4 Fabrication

Once you have approved the drawing package our craftsmen and fabricators get to work building the secret door. Every piece of lumber is hand picked by our carpenters to ensure that only the finest wood is used. Once built, our doors are stained or painted in our dust free paint room to ensure a beautiful finish designed to last for years.

Every door we make is meticulously assembled and tested at our facility prior to shipment. Using our specialized jigs we simulate the installation environment and pre-assemble every component. To ensure the product will last for a lifetime each door undergoes a life-cycle testing procedure that simulates years of typical use.



#### 5 Crating and Shipment

After testing the door is removed from its testing environment and carefully crated for shipment to the owner. Each crate we build is unique to the door it protects. The door and its additional components such as shelves, moldings, or cabinet doors are wrapped carefully and packaged with care. Our packaging procedure exceeds the standards established by our carriers.



#### 6 Installation

Due to our pre-assembly and testing routine most projects come pre-hung and ready to install into the rough opening defined during the client approval process. This makes the installation so simple that it can be performed by any local handyman, trim carpenter, or door installer. Each passageway comes with a detailed set of installation instructions and unlimited (though rarely needed) free telephone support. Installation services worldwide available upon request.





**Project Type:** Wall Unit with Sliding Door

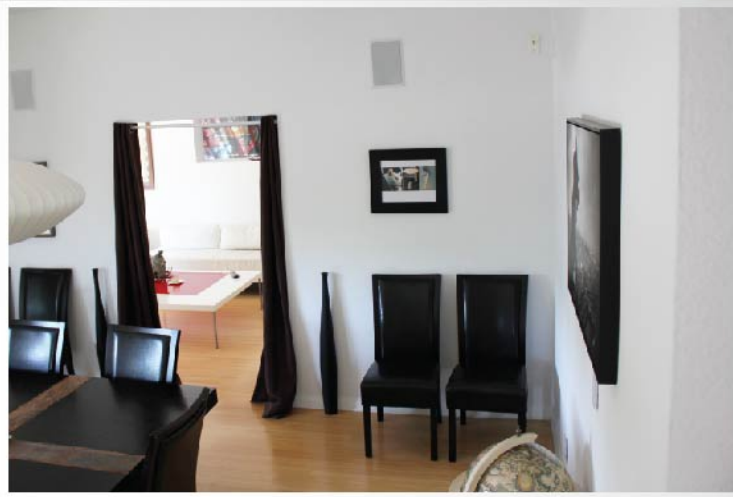
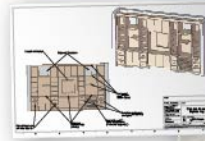
**Style:** Contemporary

**Species:** Clear Alder

**Unique features:** Fully automated.

**Overview:** A Hollywood movie producer had a large living room located just off his great room. He wanted to keep a wide opening between the 2 rooms for a more spacious feel, while having the freedom to close off the living room for privacy and use it as a guest room when needed. He also wanted to improve the appearance of his great room by adding some contemporary cabinetry.

Creative Home Engineering presented several different innovative design concepts for the client to choose from. The result was this incredible telescoping cabinet design. The client is thrilled and recently reported that several of his friends and family are now interested in getting similar projects for their own homes.



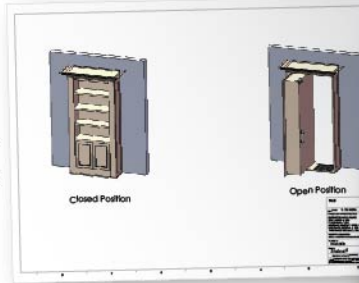
**Project Type:** Freestanding Bookcase

**Style:** Traditional

**Species:** Poplar

**Unique features:** Automatic Opening System

**Overview:** This client needed a simple bookcase door to conceal an extra room in their house, and it had to match the style and color of their existing furniture exactly. Creative Home Engineering matched the furniture from samples provided by the client and produced a beautiful bookcase that was a perfect fit.



**Project Type:** Theater Screen Door

**Style:** Traditional

**Species:** Poplar

**Unique features:** Extra Large Opening

**Overview:** A client contacted Creative Home Engineering at the beginning of a new home build. The plans called for a panic/vault room located down a hallway adjacent to the theater room, but there was no place on the wall to conceal a doorway. Creative Home Engineering came up with a design that employed a strong, lightweight aluminum chassis and a system of linkages and struts to make opening the large secret doorway nearly effortless. The client was so thrilled with the result that he recommended C.H.E. to his brother who recently purchased a project for his own home.





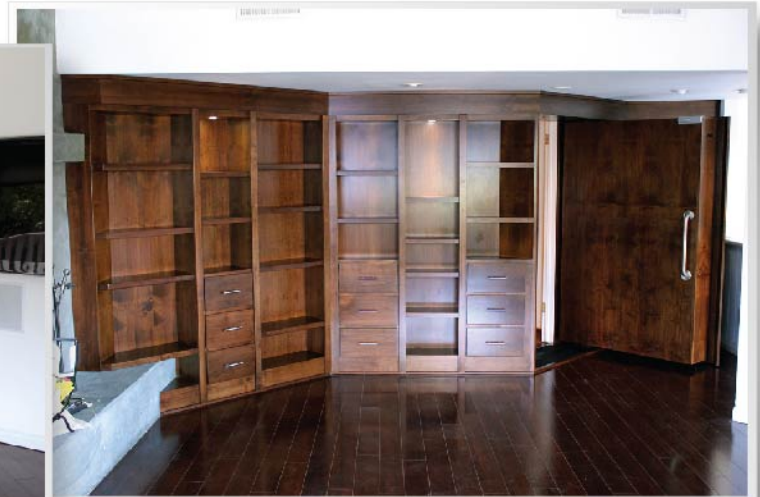
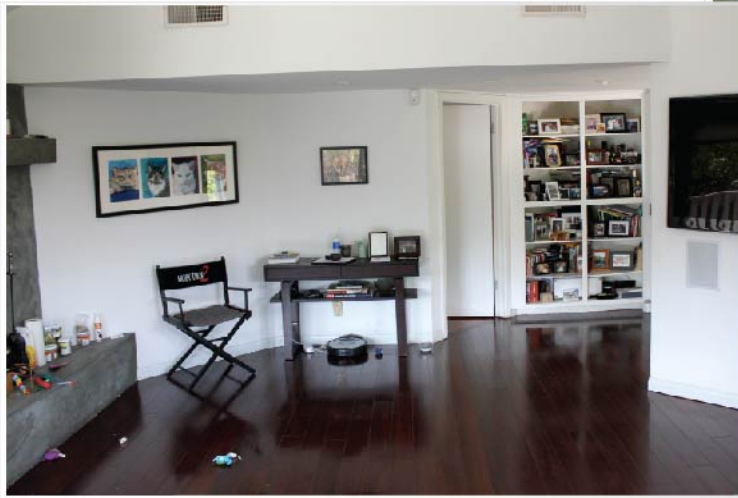
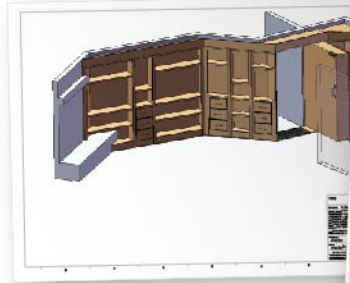
**Project Type:** Wall Unit with Bookcase Door

**Style:** Contemporary

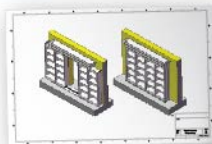
**Species:** Alder

**Unique features:** Jogged design.

**Overview:** A client had an extra bedroom located off the media room that he wanted to keep secret. At the same time, he desired to update the feel of the media room and add some attractive shelving space. Creative Home Engineering dramatically improved the ambiance of the space while simultaneously providing a private area away from prying eyes. The client is so happy with the result that he frequently shows off his secret space to his guests anyway.



**Project Type:** Double Wide Sliding Bookcase  
**Style:** Contemporary  
**Species:** Painted Poplar  
**Unique features:** Fully automated.



**Overview:** This client contacted Creative Home Engineering to assist in creating a secret blast-resistant bunker underneath the addition of a new wing. The secure area had to be accessible from multiple points in the main house, and each secret door had to resist forced entry attacks of all kinds including gunfire attacks.

We provided the client with multiple secret vault doors, including this beautiful motorized armored bookcase. When an authorized user enters the correct code into the hidden keypad, the two halves of the bookcase silently slide apart from one another granting access to the shelter's control room.



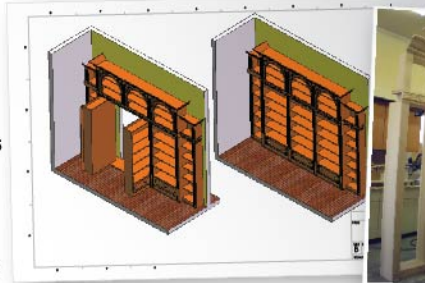
**Project Type:** Double Door Wall Unit

**Style:** Colonial

**Species:** Stained Clear Alder

**Unique features:** Automatic Opening Double Doors.

**Overview:** Located right off an ornate living room, this conventional vault door was an eyesore. The homeowner also expressed concern that it attracted too much attention to his private gun collection from visitors - making it an area of focus for an intruder. In response, Creative Home Engineering designed and built this gorgeous ornately-carved bookcase wall unit that fit perfectly with the surrounding décor.





**Project Type:** Armoire

**Style:** Colonial

**Species:** Hand Painted Clear Alder

**Unique features:** High Security Vault Door. Iris Scanning.

**Overview:** After having been victim to a home invasion the year prior, this client decided to add a whole new level of security during their remodel. This armoire secret door features a bullet proof vault style back panel that is opened with a concealed iris scanner. Few doors in the world incorporate security and beauty so seamlessly.





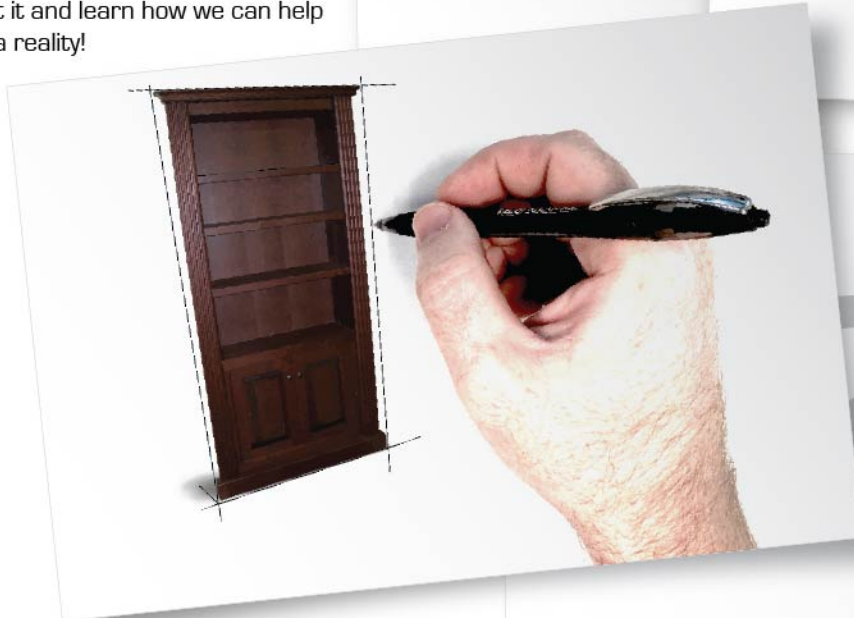
**Project Type:** ?

**Style:** ?

**Species:** ?

**Unique features:** ?

**Overview:** With Creative Home Engineering as your partner there is no limit to what your secret door project might be. Can you imagine the door of your dreams? Tell us about it and learn how we can help turn your dream into a reality!





[info@hiddenpassageway.com](mailto:info@hiddenpassageway.com)

480 899 3477

560 E. Germann Rd.

Suite 107

Gilbert, AZ 85297